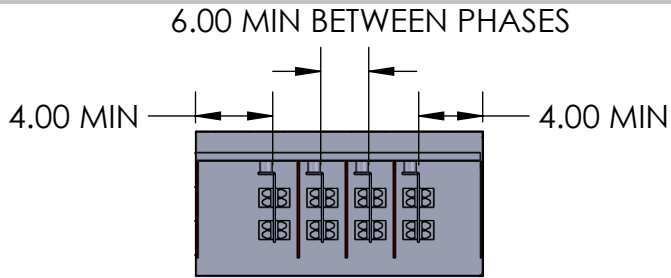


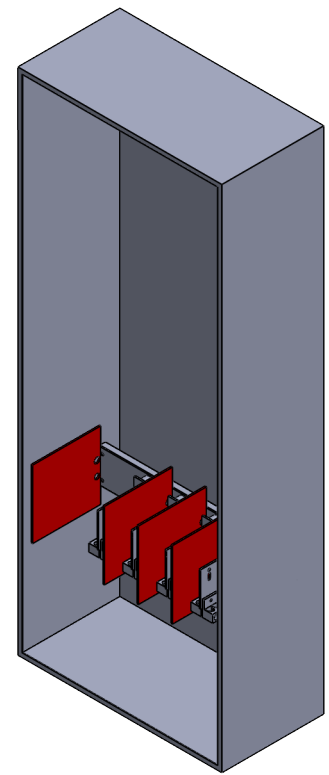
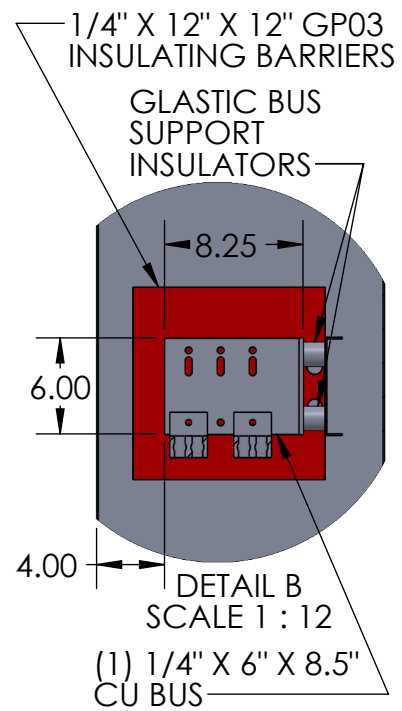
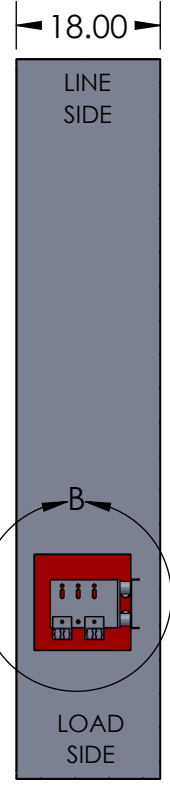
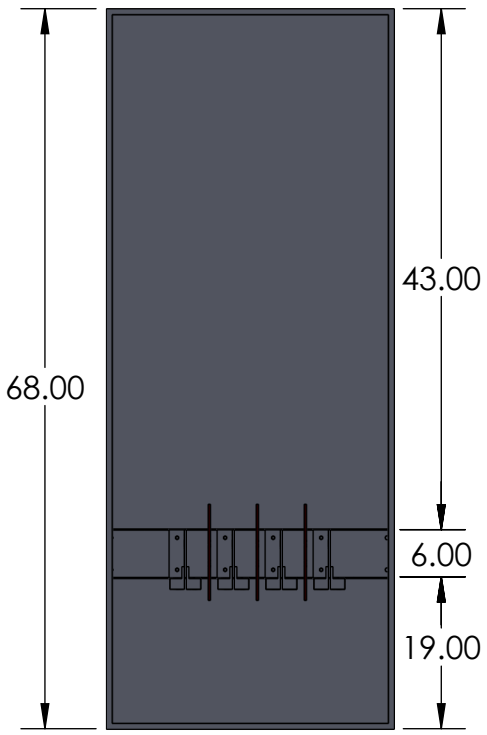
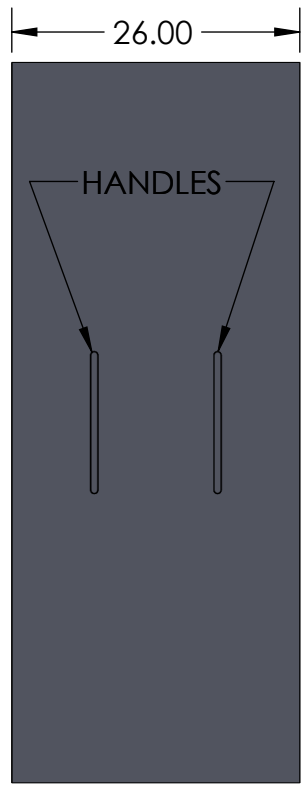
2

1



- NOTES:
1. BOX AND COVER CONSTRUCTION- GALV STEEL (12GA) FINISH: POWDER COAT GRAY ENAMEL
  2. BUS BARS- COPPER 98% CONDUCTIVITY
  3. BOX SHALL HAVE NAME PLATE WITH MANUFACTURER'S NAME
  4. FRONT COVER SHALL BE SEALABLE WITH (2) HANDLES
  5. LINE SIDE: PROVISIONS FOR (2) 600 MCM - LUGS NOT INCLUDED
  6. LOAD SIDE: MOUNT UP TO (5) 600 MCM - MECHANICAL LUGS INCLUDED
  7. NEMA 1 CONSTRUCTION: STITCH WELDED ENCLOSURE
  8. "120/208v BLACK LABEL WITH WHITE LETTERING LOCATION ON INSIDE AND OUTSIDE OF THE ENCLOSURE FOR 120/208V SERVICE ONLY FOR 277/480V SERVICE SEE 348210-72-N1 OR 348211-96-N1
  9. SHORT CIRCUIT CURRENT RATING 100,000 SYM RMS AMPS

B



B

A

A

			<b>MATL:</b> 12 GA GALV <b>FINISH:</b> ANSI 61 GREY POWDER COAT <b>WEIGHT:</b>		<b>DRAWING TITLE:</b> EO-68-N1 CUT SHEET <b>PART #:</b> NAV-EO-68-9072B	
155 MARCUS BLVD HAUPPAUGE, NEW YORK 11788 PH: (718) 257-2111 FAX: (718) 257-2626			<b>UNLESS OTHERWISE SPECIFIED:</b> 1. REMOVE ALL BURRS AND BREAK ALL SHARP EDGES .015 X 45° OR .015R 2. DIMENSIONAL LIMITS APPLY AFTER PLATING 3.  MACHINED SURFACES EXCEPT AS NOTED		<b>DESCRIPTION:</b> NEMA 1 SERVICE ENTRANCE BOX 120/208V SERVICE UP TO 2 SETS LINE SIDE SPECIFIED TO CON ED EO-9072-B	
<b>DRAWN BY:</b> N. BOSETTI <b>DATE:</b> 12/30/2025 <b>APPROVED BY:</b>	<b>PROPRIETARY AND CONFIDENTIAL</b> THE INFORMATION CONTAINED IN THIS DRAWING IS THE SOLE PROPERTY OF Nav-Tech Inc. ANY REPRODUCTION IN PART OR AS A WHOLE WITHOUT THE WRITTEN PERMISSION OF Nav-Tech Inc. IS PROHIBITED.		<b>UNLESS OTHERWISE SPECIFIED:</b> ALL DIMENSIONS ARE NOMINAL UNLESS EXPLICITLY SPECIFIED OTHERWISE		<b>DO NOT SCALE DRAWING</b>	SCALE: 1:24 SIZE: A SHEET: 1 OF 1 REV: 7

2

1